



MasterPipe™ Profiler (MPP)

Economical CNC Pipe Cutting Solution

The new Vernon Tool™ MasterPipe™ Profiler (MPP) is a 2-axis, CNC pipe cutting machine capable of cutting and profiling pipe having an outside diameter of 1 to 12-inches and a length of up to 40-feet.

Featuring a rugged design that is the standard for Vernon Tool™ machines and powered by WinMPM, Vernon's exclusive Microsoft® Windows®-based operating system, the MPP improves pipe fabrication productivity and quality by consolidating set-up, programming and cutting into one operation.

Once the pipe is loaded, programming consists of simply inputting pipe dimensional data and selecting the types of cuts from Vernon's cut library. The menu-driven WinMPM operating system is easy to use and doesn't require highly skilled operators. WinMPM is also available off-line for use on any computer and is compatible with many CAD/CAM packages.

Vernon Tool™ backs the MPP with world-class service and support including Ve-Assist™ internet-based service.

FEATURES

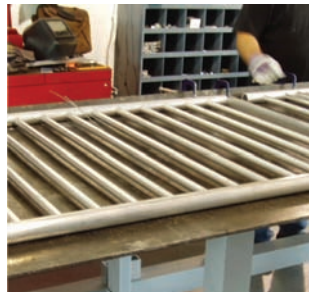
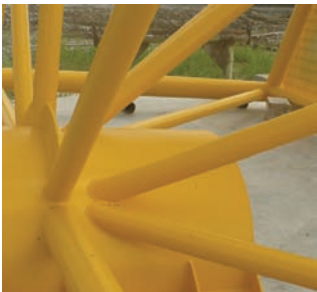
- Economically priced – great choice for smaller shops.
- Consolidates set-up, programming and cutting – achieve improvements in productivity and quality.
- Easy to use programming software – no special skills required.
- Large pre-loaded cut library – provides maximum pipe configuration flexibility.
- Ve-Assist™ internet diagnostics – maximizes machine uptime.

TYPES OF CUTS:

- Straight
- Miter
- Saddle
- Centerline Offset
- Multiple Intersection
- Round, Rectangular and Overlapping Pipe Holes
- Gusset Slot

IDEAL FOR:

- Fencing
- Handrails
- Tube Frame Assemblies
- Bicycle Frames





MasterPipe™ Profiler (MPP)

Economical CNC Pipe Cutting Solution

STANDARD SPECIFICATIONS

Pipe Diameter Range	1" - 12"
Max. Weight Per Foot	50 lbs.
Max. Total Weight	600 lbs.
Travel - Longitudinal	8 feet (expandable to 38 feet)
Max. Cutting Speed	200 inches per minute (limited by cutting process)
Bevel Angle	Manual
Pipe Rotation Drive	Precision planetary gear head and gear belt
Pipe Linear Motion	Precision rack and pinion
Input Power	120VAC, 1-phase, 60 Hz
Temperature (operating)	40 - 100° F (1 - 38° C)
Cutting Process	Oxyfuel (plasma optional)

SOFTWARE

Operating System	WinMPM (run on Microsoft® Windows®)
Shape Library	Straight, miter, saddle, centerline offset, multiple intersection, elbow support, gusset slot, round hole, rectangular hole, saw cut, overlapping pipe holes (with axial/baseline/work point offsets; Note: calculations based on ID fit-up)
Graphics	Menu-driven prompts with color icons, 2D and 3D dimensional graphics, interactive software and hardware error messages
CAD/CAM	Compatible with popular 3D modeling and isometric software. Reads G-code programs. Note: VCAD for custom profiles available as an option).
Internet Service	VE-Assist™ web-link direct to VERNON Tool™ factory for remote computer diagnostics

COMPUTER MOTION CONTROL

Display	Color VGA touch screen
Keyboard	116-key alphanumeric
Processor	Industrial PC with RAM and ROM
Motion Control	UMAC 2-axis
Motors	Tachless DC servo drives with optical isolation
Machine Accuracy	.030-inch
Machine Repeatability	.010-inch
Data I/O Options	Ethernet, LAN, USB Port

Specifications subject to change without notice.

CUSTOMER ASSISTANCE POLICY

The business of The Lincoln Electric Company® is manufacturing and selling high quality welding equipment, consumables, and cutting equipment. Our challenge is to meet the needs of our customers and to exceed their expectations. On occasion, purchasers may ask Lincoln Electric for information or advice about their use of our products. Our employees respond to inquiries to the best of their ability based on information provided to them by the customers and the knowledge they may have concerning the application. Our employees, however, are not in a position to verify the information provided or to evaluate the engineering requirements for the particular weldment. Accordingly, Lincoln Electric does not warrant or guarantee or assume any liability with respect to such information or advice. Moreover, the provision of such information or advice does not create, expand, or alter any warranty on our products. Any express or implied warranty that might arise from the information or advice, including any implied warranty of merchantability or any warranty of fitness for any customers' particular purpose is specifically disclaimed.

Lincoln Electric is a responsive manufacturer, but the selection and use of specific products sold by Lincoln Electric is solely within the control of, and remains the sole responsibility of the customer. Many variables beyond the control of Lincoln Electric affect the results obtained in applying these types of fabrication methods and service requirements.

Subject to Change – This information is accurate to the best of our knowledge at the time of printing. Please refer to www.lincolnelectric.com for any updated information.

WORLD-CLASS AUTOMATED CUTTING EXPERTISE

With nearly 1,000 installations worldwide, Vernon Tool Company is the industry's preferred source and global supplier of 3D profiling, customized pipe cutting, and metal fabrication machinery. You'll find our products in the process piping, offshore, structural, pressure vessel, and shipbuilding industries.

EXCEPTIONAL CUSTOMER SERVICE

Vernon Tool's Ve-Assist™ allows direct communication between the user and the supplier to troubleshoot and train in real time with Vernon cutting machines in the field over a secure broadband connection:

- Service experts log on the machine to observe, exchange data files, update operating systems, and diagram procedures or problems.
- The dedicated web link also serves as a valuable tool for demonstration and training purposes on desktop PCs.

A virtual service technician is side-by-side the machine operator to maximize machine productivity and operator efficiency. Post-warranty contracts also include this innovative service to ensure customers' ongoing satisfaction and success.



VERNON Tool Company

503 Jones Road

Oceanside, CA 92058 USA

Phone: 760-433-5860

Fax: 760-757-2233

Email: sales@vermontool.com

www.vermontool.com

A Lincoln Electric Company